



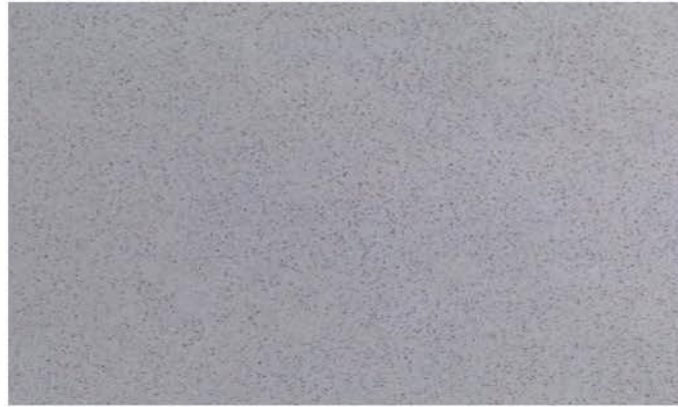
WINTER WHITE



DAWN



SNOWFLAKE



DUSK



SUNDOWN

ItalianStone™ by IceStone® is a beautiful commercial grade surface that compliments any kitchen and bath, and is equally suited for heavy use applications, including: bars, food prep, reception desks, and cash transaction areas.

ItalianStone is a versatile non-porous surface resistant to flexing, abrasion and acids, and requires minimal maintenance.

93% of **ItalianStone** is composed of reclaimed quartz. Slabs are manufactured using the state-of-the-art Breton™ system that is used to manufacture most high end engineered stone products and known for its low environmental impact, safe manufacturing process, and product consistency.

CERTIFICATIONS



ItalianStone is NSF 51 Certified for splash zones in food related establishments.



ItalianStone has achieved GREENGUARD GOLD Certification for indoor air quality, ensuring the product is acceptable for use in environments such as schools and healthcare facilities.

SPECIFICATIONS

Standard slab sizes available:

120" x 55", thickness ¾" (2cm) or 1¼" (3cm)

| | |
|----------|-------------------------|
| Density: | 2,283 kg/m ³ |
|----------|-------------------------|

| | |
|-------------------|--------|
| Water Absorption: | 0.005% |
|-------------------|--------|

| | |
|--------------------|--------|
| Flexural Strength: | 48 MPa |
|--------------------|--------|

| | |
|----------------------|-------|
| Abrasion Resistance: | 187.2 |
|----------------------|-------|

| | |
|-------------------|-------|
| Shock Resistance: | 5.8 J |
|-------------------|-------|

| | |
|----------------------|----|
| Chemical Resistance: | C4 |
|----------------------|----|

| | |
|-----------------------|-----------------------|
| Compression Strength: | 159 N/mm ² |
|-----------------------|-----------------------|

| | |
|----------------|--------|
| Mohs Hardness: | 7 mohs |
|----------------|--------|

| | |
|------------------|---------|
| Fire Resistance: | Class A |
|------------------|---------|

| | |
|-------------------|-----------------------------------|
| Slide Resistance: | 68 (dry surface) 16 (wet surface) |
|-------------------|-----------------------------------|